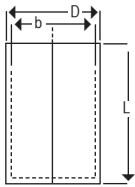


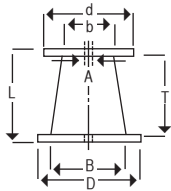
Spool Specifications

Drums



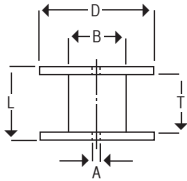
PACKAGE TYPE	FLANGE		BARREL		TRAVERSE LENGTH (T-IN.)	OVERALL LENGTH (L-IN)	ARBOR HOLE DIAM. (A-IN)	TARE WEIGHT (POUNDS)		NOM. NET WEIGHT (POUNDS)	
	TOP (d-IN.)	BOTTOM (D-IN.)	TOP (b-IN.)	BOTTOM (B-IN.)				PLASTIC	FIBER/METAL	COPPER	ALUMINUM
	Drum	20	20	13							
½ Drum	20	20	13	13	—	15	—	12	250	90	
Pail	11	11	7	7	—	12	—	3	85	30	

Tapered Spools



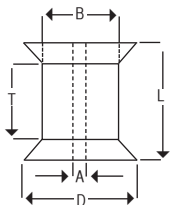
PACKAGE TYPE	FLANGE		BARREL		TRAVERSE LENGTH (T-IN.)	OVERALL LENGTH (L-IN)	ARBOR HOLE DIAM. (A-IN)	TARE WEIGHT (POUNDS)		NOM. NET WEIGHT (POUNDS)	
	TOP (d-IN.)	BOTTOM (D-IN.)	TOP (b-IN.)	BOTTOM (B-IN.)				PLASTIC	FIBER/METAL	COPPER	ALUMINUM
	TP1000	18¾	20½	9							
TP500	15	16	8	9	24	26	1½	12	—	500	180
TP250	15	16	8	9	12	14	1½	10	15.0	250	90
TP100	10	11	6	7	12	13	1½	3.05	8.0	85	30
TP50	8½	9¼	5½	6½	9	10	1½	1.6	—	45	—

Straight Spools



PACKAGE TYPE	FLANGE		BARREL		TRAVERSE LENGTH (T-IN.)	OVERALL LENGTH (L-IN)	ARBOR HOLE DIAM. (A-IN)	TARE WEIGHT (POUNDS)		NOM. NET WEIGHT (POUNDS)	
	TOP (d-IN.)	BOTTOM (D-IN.)	TOP (b-IN.)	BOTTOM (B-IN.)				PLASTIC	FIBER/METAL	COPPER	ALUMINUM
	30"	30	30	14							
24"	24	24	14	14	6	8⅞	1½	20	—	250	80
12" x 7"	12	12	6½	6½	7	8	1½	2.8	—	85	26
12" x 4" WR	11¾	11¾	8¼	8¼	3⅝	4	2	1.8	—	30	10
8" x 6"	8	8	4½	4½	5⅝	7¼	3	1.5	—	30	10
6" x 6"	6	6	3¾	3¾	6	7	⅝	.95	—	12	5
6" DIN *	6¼	6¼	4	4	5	6¼	⅞	1.02	—	10	3
6" X 3½" *	6	6	3½	3½	3½	4⅝	⅝	.66	—	8	3
6" X 3½"	6	6	3½	3½	3½	4	⅝	.43	—	8	3
6" RB	6	6	4	4	3	4	⅝	.64	—	8	3
4⅞" DIN *	4⅞	4⅞	3⅞	3⅞	4	4⅞	⅝	.55	—	6	2
5" RB	5	5	4	4	3	4	⅝	.55	—	4	1.5
4⅞	4⅞	4⅞	3	3	3½	4	⅝	.39	—	5	2
3"	3	3	1¾	1¾	3½	4	⅝	.17	—	2	.5
3" DIN *	3⅞	3⅞	2	2	2½	3⅝	⅝	.15	—	1	.30
2½"	2½	2½	1¾	1¾	3	3⅞	⅝	.15	—	.5	.15
2¼"	2¼	2¼	1¾	1¾	1	1⅝	⅝	.09	—	.20	.07

Taper Flange Spools



PACKAGE TYPE	FLANGE		BARREL		TRAVERSE LENGTH (T-IN.)	OVERALL LENGTH (L-IN)	ARBOR HOLE DIAM. (A-IN)	TARE WEIGHT (POUNDS)		NOM. NET WEIGHT (POUNDS)	
	TOP (d-IN.)	BOTTOM (D-IN.)	TOP (b-IN.)	BOTTOM (B-IN.)				PLASTIC	FIBER/METAL	COPPER	ALUMINUM
	10" TF	10	11	6							
8" TF	8	8	4	4	3⅝ - 7⅝	8	⅞	.98	—	22	—
6" TF	6	6	3⅞	3⅞	3 - 5¼	6¼	⅝ - ⅞	.69	—	8	3
5" TF	4⅞	4⅞	2½	2½	2¼ - 4	4⅞	⅝	.35	—	5	1.75
4" TF	4	4	2	2	1⅞ - 3¼	4	⅝	.15	—	3	1
3" TF	3	3	2¼	2	2¼ - 3¼	3⅞	⅝	.19	—	1.5	.5
2½" TF	2½	2½	1¾	1¾	2⅞ - 3¼	3⅞	⅝	.16	—	.66	.15

*Thick flange